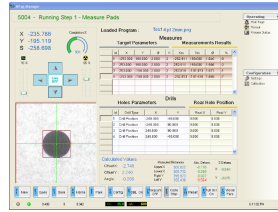




Carbide Related Technologies, Inc.
355 Sackett Point Road Unit 5
North Haven, CT 06473
P: (203)281-1266

Mach3Lab

Antares Inner Layer Optimization System



Antares Features:

- High performance CNC Integrating axis movement, vision system and I/O management
- Highly accurate position transducers
- Linear motors
- Highly reliable X-Ray source and camera
- Part program-based process with graphical and statistical output of calculated alignment adjustments
- Manual load with laser pointer for fast and accurate alignment
- Vacuum to secure panel in-place while processing
- 20 second cycle time check for a four-target alignment process
- No special anti-X-Ray protection is required for the operator.



Mach3 Lab designs and produces systems for the multilayer PCB inspection and reference drilling. The systems use the most advanced visible light and X-Ray technologies available.

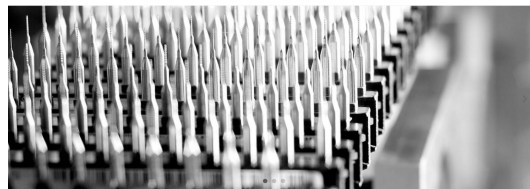
The design, production quality and the factory management are the basis for their system success.

About CRT:



"One Company - Total Cutting Tool Solutions"

CRT is a supplier of equipment, products and services primarily used in PCB CNC areas. Equipment includes LENZ GmbH-CNC Machines, Mach 3Labs- X-Ray Equipment, VF Products-CNC Support Equipment, iVision- vacuum system, HPM GmbH – MQL Misting Systems, Ind-Sphinx and Axis Microtools, GCT-Diamond Coated Tools, Dowtech – CNC Service/Training and CRT Re-sharpening Services.



Home | Carbide Related Technologies

Customers are the core of our business and we will utilize the full scope of our internal resources, and those of our associates, to help our customers be successful. The commitment of our support is not dictated by the sizes of our customer's...

[Read more](#)
www.carbiderelatedtech.com